

BALDOR • RELIANCE

Customer information packet

PCL1327M

5HP, 3450RPM, 1PH, 60HZ, 56HCY, 3535LC, ODTF

Class - None

Division - Not Applicable

Specifications

Enclosure	ODTF
Frame	56HCY
Frame Material	Steel
Frequency	60.00 Hz
Motor Letter Type	Cap Start, Cap Run
Output @ Frequency	5.000 HP @ 60 HZ
Phase	1
Synchronous Speed @ Frequency	3600 RPM @ 60 HZ
Voltage @ Frequency	230.0 V @ 60 HZ
XP Class and Group	None
XP Division	Not Applicable
Agency Approvals	UR CSA
Ambient Temperature	40 °C
Auxillary Box	No Auxillary Box
Auxillary Box Lead Termination	None
Base Indicator	Rigid
Bearing Grease Type	Polyrex EM (-20F +300F)
Blower	None
Current @ Voltage	23.000 A @ 230.0 V 24.000 A @ 208.0 V
Drip Cover	Drip Cover
Duty Rating	CONT
Efficiency @ 100% Load	74.2 %
Electrically Isolated Bearing	Not Electrically Isolated
Feedback Device	NO FEEDBACK
Front Face Code	Drip Cover Mounting
Front Shaft Indicator	None
Heater Indicator	No Heater
High Voltage Full Load Amps	23.0 a
Insulation Class	F
Inverter Code	Not Inverter

Part detail

Revision	AR
Type	AC
Mech. spec.	35L263
Base	
Status	PRD/A
Elec. spec.	35WGS322
Layout	35LYL263
Eff. date	05-14-2024
CD Diagram	CD0002A02
Poles	02
Leads	2#12 A PH,3#18 B&J
Proprietary	False
Created date	06-22-2007

KVA Code	F
Lifting Lugs	No Lifting Lugs
Locked Bearing Indicator	Locked Bearing
Motor Lead Exit	Cap Box
Motor Lead Quantity/Wire Size	2 @ 12 AWG, A PH
Motor Lead Termination	Flying Leads
Motor Standards	NEMA
Motor Type	3535LC
Mounting Arrangement	F1
Number of Poles	2
Overall Length	14.11 IN
Power Factor	95
Product Family	General Purpose
Pulley End Bearing Type	Ball
Pulley Face Code	C-Face
Pulley Shaft Indicator	Standard
Rodent Screen	None
Service Factor	1.00
Shaft Diameter	0.625 IN
Shaft Extension Location	Pulley End
Shaft Ground Indicator	No Shaft Grounding
Shaft Rotation	Reversible
Shaft Slinger Indicator	No Slinger
Speed	3450 rpm
Speed Code	Single Speed
Starting Method	Direct on line
Thermal Device - Bearing	None
Thermal Device - Winding	Do Not Use
Vibration Sensor Indicator	No Vibration Sensor
Winding Thermal 1	Manual Thermal Overload
Winding Thermal 1 Location	KO
Winding Thermal 2	None

Nameplate

NP1257L									
CAT.NO.	PCL1327M								
SPEC.	35L263S322								
HP	5								
VOLTS	230								
AMP	23								
RPM	3450								
FRAME	56HCY		HZ	60		PH	1		
SER.F.	1.00	CODE	F	DES	-	CL	F		
NEMA-NOM-EFF	74.2	PF	95						
RATING	40C AMB-CONT								
CC									
DE	6205	ODE	6203						
ENCL	ODTF	SN							

AC Induction Motor Performance Data

Record # 8979

Typical performance - not guaranteed values

Winding: 35WGS322-R001		Type: 3535LC	Enclosure: ODTF	
Nameplate Data			230 V, 60 Hz: Single Voltage Motor	
Rated Output (HP)	5	Full Load Torque	7.7 LB-FT	
Volts	230	Start Configuration	direct on line	
Full Load Amps	23	Breakdown Torque	18.8 LB-FT	
R.P.M.	3450	Pull-up Torque	12.8 LB-FT	
Hz	60 Phase	Locked-rotor Torque	14.7 LB-FT	
NEMA Design Code	- KVA Code	Starting Current	122 A	
Service Factor (S.F.)	1	No-load Current	8.9 A	
NEMA Nom. Eff.	74.2 Power Factor	Line-line Res. @ 25°C	0.535 Ω A Ph 1.1 Ω B Ph	
Rating - Duty	40C AMB-CONT	Temp. Rise @ Rated Load	89°C	

Load Characteristics 230 V, 60 Hz, 5 HP

% of Rated Load	25	50	75	100	125	150
Power Factor	78	89	94	95	96	95
Efficiency	56.5	69.5	74.5	74.2	72.5	66
Speed	3570	3535	3500	3450	3390	3275
Line amperes	10.4	13.7	17.8	23	28.6	36.2

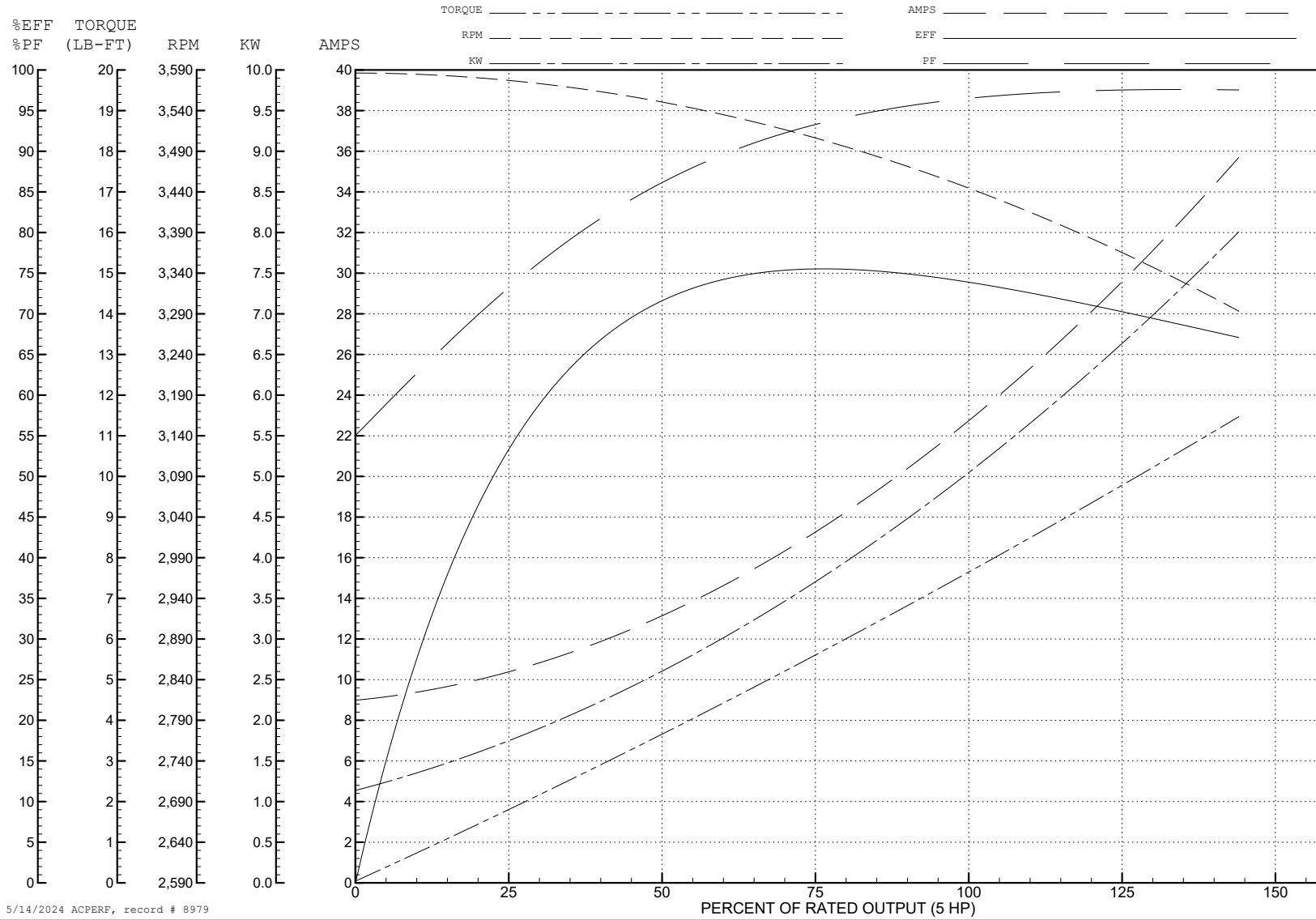
ABB Motors and Mechanical Inc.

WINDING # 35WGS322

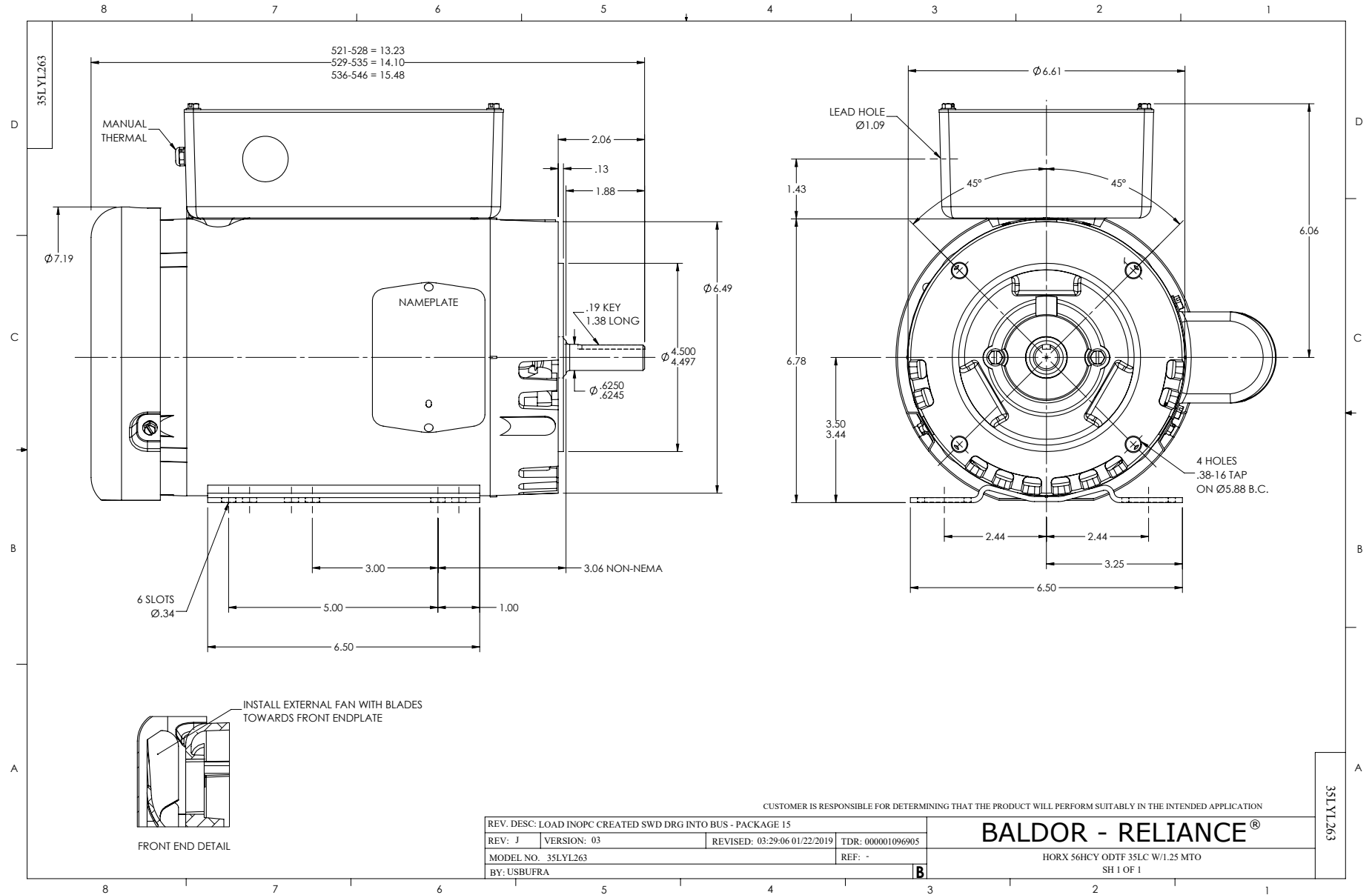
Typical performance - not guaranteed values.

5 HP 1 PH 60 HZ 3450 RPM 230 V 3535LC

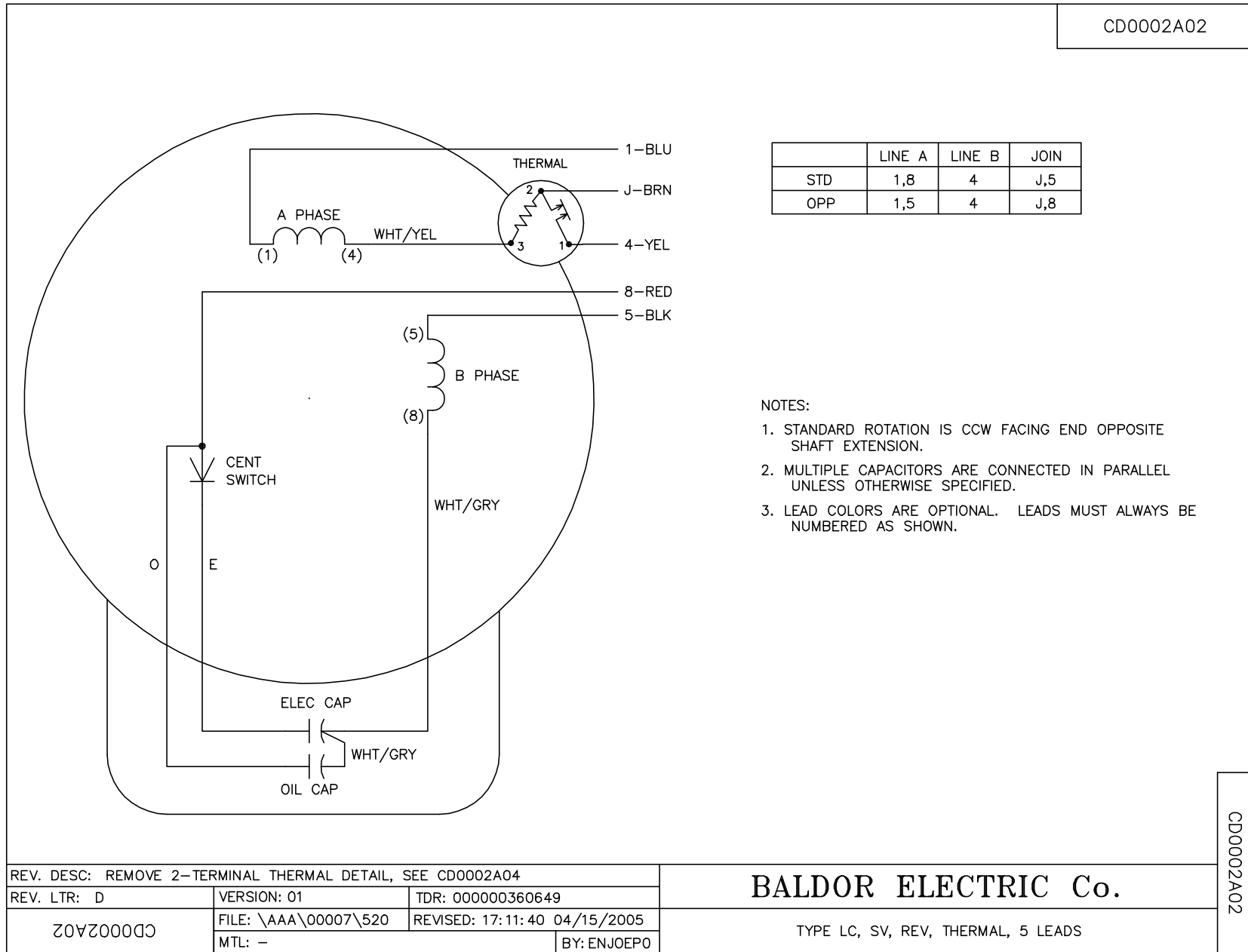
TORQUES (LB-FT): PO=18.8 PU=12.8 LR=14.7 LRA=122



5/14/2024 ACPERF, record # 8979



CD0002A02



	LINE A	LINE B	JOIN
STD	1,8	4	J,5
OPP	1,5	4	J,8

NOTES:

1. STANDARD ROTATION IS CCW FACING END OPPOSITE SHAFT EXTENSION.
2. MULTIPLE CAPACITORS ARE CONNECTED IN PARALLEL UNLESS OTHERWISE SPECIFIED.
3. LEAD COLORS ARE OPTIONAL. LEADS MUST ALWAYS BE NUMBERED AS SHOWN.

REV. DESC: REMOVE 2-TERMINAL THERMAL DETAIL, SEE CD0002A04		
REV. LTR: D	VERSION: 01	TDR: 000000360649
CD0002A02	FILE: \AAA\00007\520	REVISED: 17:11:40 04/15/2005
	MTL: -	BY: ENJOEPO

BALDOR ELECTRIC Co.

TYPE LC, SV, REV, THERMAL, 5 LEADS

CD0002A02